

Browns Cranes

ABN 13 130 506 133

PTY.LTD.

- Crane Hire
- Spotters
- Crane Operators
- Platform Operators
- Riggers/Dogman
- Forklift Operators

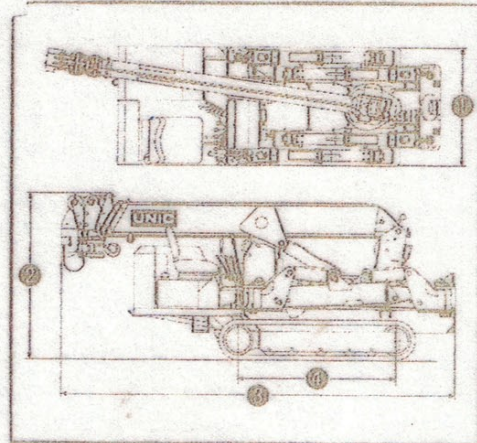
Mat Brown: 0407 880 986

Fax: 0359 405 263

P.O. Box 594 Pakenham. 3810



Crane Model	UR-A376CL
Capacity	3,030 kg at 2.4 m 6,680 lbs at 7.87 ft
Working Radius	0.75 m to 14.3 m 2.46 ft to 46.9 ft
Hook Height above ground level (Approx)	Max. 14.4 m Max. 47.2 ft
Hook Height below ground level (Approx)	Max. 18.9 m Max. 62.0 ft
Boom length	Min. 3.63 m to Max. 14.45 m Min. 11.9 ft to Max. 47.4 ft
Boom Extending Speed	10.82 m / 23.0 sec 35.5 ft / 23.0 sec
Boom Section	6 Section
Wire Rope	Construction: 6 × WS(26) Diameter and Length: 8.0 mm × 85.0 m Breaking Strength: 4,400 kg Construction: 6 × WS(26) Diameter and Length: 0.32 inch × 278.8 ft Breaking Strength: 9,680 lbs



Measurements & Weight

Crane Model	UR-A376CL	
① Total Width	1,280 mm	4.20 ft
② Total Height	1,800 mm	5.90 ft
③ Total Length	4,340 mm	14.24 ft
④ Wheel-Base	1,730 mm	5.67 ft
Gross Weight	3,530 kg	7,766 lbs

UR-A376CL RATED LOADS

ALL BOOMS RETRACTED and SECOND STAGE EXTENDED

WORKING RADIUS	m	~2.4	2.5	2.7	3.0	3.5	4.0	4.5	5.0	5.69	
Outrigger	Extended	kg	3,030	2,780	2,530	2,280	1,930	1,630	1,430	1,250	1,080
	Mid-Extended	kg	3,030	2,780	2,530	2,280	1,910	1,470	1,080	820	600
	Retracted	kg	3,030	2,780	2,530	1,960	1,360	1,010	770	600	430

THIRD STAGE EXTENDED

WORKING RADIUS	m	~2.7	3.0	3.5	4.0	4.5	5.0	5.5	6.0	7.0	7.84	
Outrigger	Extended	kg	2,230	2,030	1,880	1,380	1,190	1,050	930	830	680	630
	Mid-Extended	kg	2,230	2,030	1,880	1,380	1,080	820	650	560	430	320
	Retracted	kg	2,230	1,960	1,360	1,010	770	600	470	410	310	220

FOURTH STAGE EXTENDED

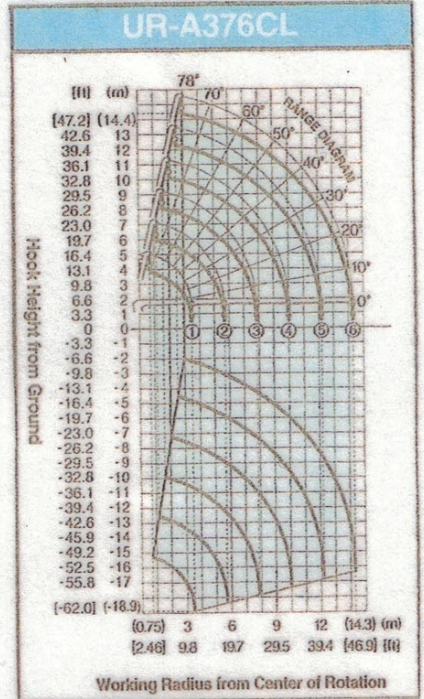
WORKING RADIUS	m	~3.5	4.0	4.5	5.0	5.5	6.0	7.0	8.0	9.0	9.99	
Outrigger	Extended	kg	1,030	1,030	930	830	780	730	630	530	480	430
	Mid-Extended	kg	1,030	1,030	930	820	650	580	430	530	260	190
	Retracted	kg	1,030	1,010	770	600	470	410	310	220	160	120

FIFTH STAGE EXTENDED

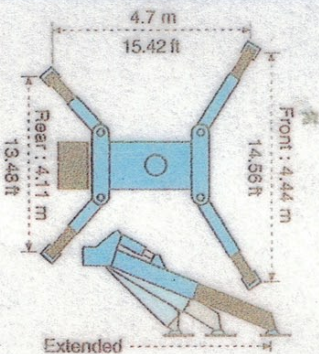
WORKING RADIUS	m	~4.5	5.0	5.5	6.0	7.0	8.0	9.0	10.0	11.0	12.14	
Outrigger	Extended	kg	630	630	550	480	400	350	310	280	250	230
	Mid-Extended	kg	630	630	550	480	400	320	260	190	150	120
	Retracted	kg	630	600	470	410	310	220	160	120	80	60

SIXTH STAGE EXTENDED

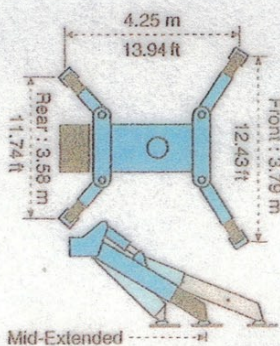
WORKING RADIUS	m	~4.9	5.5	6.0	7.0	8.0	9.0	10.0	11.0	12.0	13.0	14.3	
Outrigger	Extended	kg	330	300	280	250	230	210	190	170	160	140	130
	Mid-Extended	kg	330	300	280	250	230	210	190	150	120	90	70
	Retracted	kg	330	300	280	250	220	160	120	80	60	—	



Outrigger Extended



Outrigger Mid-Extended



Outrigger Retracted

